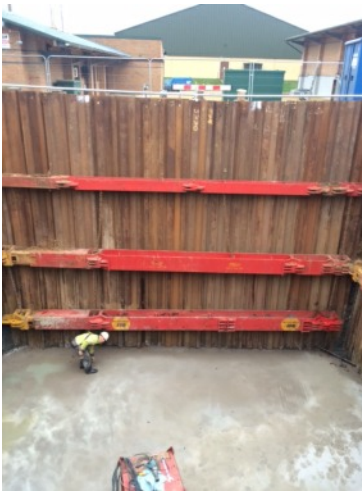




matt durbin associates
.....engineering integrity

Sutton Bingham Timber Headings

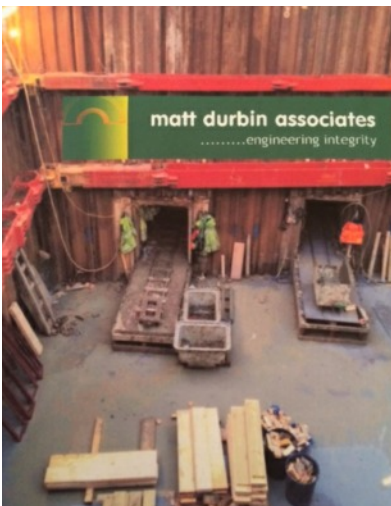
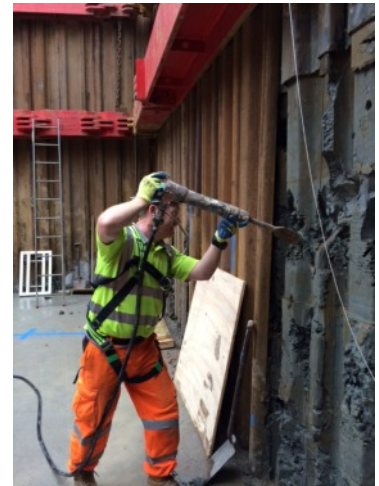
Wessex Water required two individual timber headings from a newly constructed drive pit to their existing pipework which was due to be upgraded. Due to site logistics these two headings had to leave the drive pit at exactly 11.25 degrees to ensure they met the existing pipework 8.5 meters ahead. These headings were over seven meters deep and using the timber heading technique was the safer, more efficient and cost effective method of installing the new pipework system.



The large 10m x 10m by 7m deep drive pit was constructed using heavy duty sheet piles and hydraulic waling beams, with a 500mm thick concrete base slab.

The sheet piles in the heading area were removed and cut down to size and the MDA Miners began the hard work to remove very stiff clay from the face of the heading.

As previously mentioned the setting out of these headings were extremely important to ensure the pipework 8.5m ahead was met. MDA's Site Agent set the works out precisely to avoid needing to alter the alignment of the heading



Although these two photos show the headings in very close proximity, the ground conditions were quite different with the heading on the right hand side encountering a large pocket of overhead lying water which ran out into the heading for nearly three days until it dried out. This was believed to be an redundant water main that had been leaking for several years.

Both heading were completed ahead of schedule to the Client's satisfaction without accident or incident. Another excellent example of our teams hard work

