

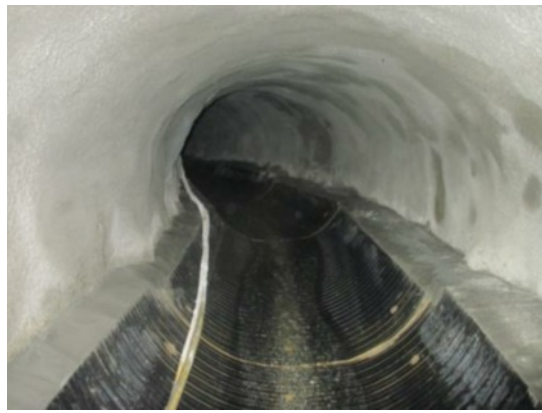


matt durbin associates
.....engineering integrity

Radstock Shaft & Lining Works

The Radstock works comprised of 600m of pipeline renovation that was split into two separate elements of work. An existing pipeline ran underneath several businesses and properties and was in need of repair. The first 200 meters of the pipeline could be accessed through an existing manhole, however two new shafts had to be built to gain access to the remaining 400m of the pipeline.

The first 200m of pipeline was being cleaned and prepared for the combination of a plastic half channel solution. During this time the two additional shafts were being constructed. Photos of these elements can be seen below.



The photo above on the left shows the masonry arch culvert being prepared for the sprayed concrete lining while the photo on the right shows the completed works



These two photos show the 2.4m internal diameter segmental shaft ready to have the ring beam poured with concrete and at completion, 8m deep onto the culvert.



The photo on the right shows another access shaft but this is a temporary shaft and is only 3m deep. This uses sheetpiles and heavy timber waling beams.



This shaft shown on the left has been excavated to 2m wide by 3m long internally to give the required working room to facilitate the final 200m of concrete sprayed lining.