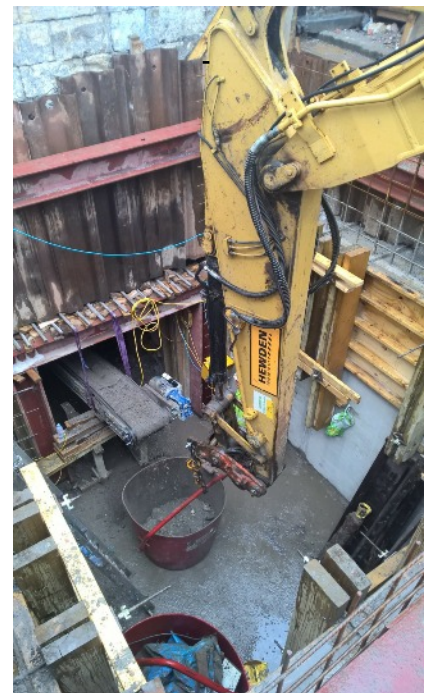
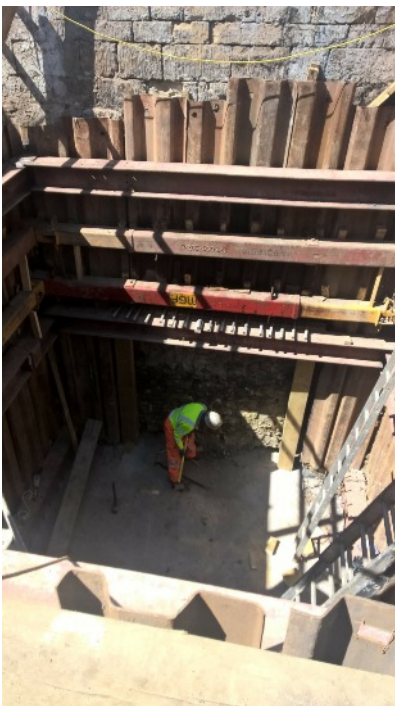


matt durbin associates
.....engineering integrity

Lamb Inn Shaft & Basement Excavation

The Lamb Inn Public House in Radstock has recently been purchased by a developer who is turning the building into residential properties with a large restaurant business in the basement. In order to access the basement, a 4.5m deep shaft was designed and installed by MDA. Once the shaft was constructed, our specialist operatives broke through the 1.2m thick wall to create an doorway large enough for disabled access. Small plant and equipment was lowered into the shaft and through the doorway which facilitated the removal of 800 Tonnes of debris that was in the basement. The following photos were taken at key stages of the works.

The final RC wall pour including the soffit of the doorway opening, left to cure for 7 days.



Once the shaft was at depth, a 500mm thick concrete base was installed. From this a temporary timber frame was used to support the ground above while the doorway was broken through the 1.2m thick wall.



The material was excavated using 2 mini excavators and removed from the basement using a conveyor belt system. Over 500 large kibble skips of material were removed and recycled locally.

The excavated basement has a total volume of over 1100m³ at 20m long and over 7m high